

Product Data Sheet

Empire Plank Vinyl Tile

Model : EF-105, EF-106,
EF-107, EF-108, EF-109,
EF-110

Part No : 7600 Series



EF-105



EF-106



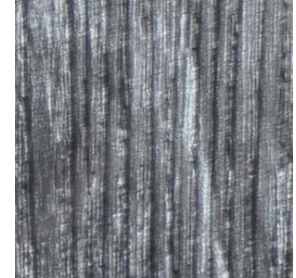
EF-107



EF-108



EF-109



EF-110

The cutting edge technology of Vinyl Floor has become a wide choice of consumers these days. To keep ourselves align with the ever growing market demand. We have development designed and fabricated the following sophisticated series to suit the global demand.

Vinyl floor is fast becoming a preferred friend in all floorings due to its flexibility, elasticity, strength and durability. We can now develop any range of finishing and yet enjoy the attributes of the compound.

Wooden Plank provides a vintage feeling on the overall outlook of the environment. We need not worry about natural defects on wood since our technology convert wooden flooring to Vinyl. The process not only saves cost, it also ensures you of minimal hassle in dictate natural wood which gives you an aura of class above normal floor. The wooden Plank series is definitely a choice to consider when you are constructing your home or office

Dimension

Thickness : 2 mm , 3mm

Size : 4" x 36", 6" x 36"

Pro-Pack Materials Pte Ltd

Blk 970, Toa Payoh North, #04-18
Toa Payoh Industrial Estate
Singapore 318992

Tel : +65 63541511
Fax : +65 63541711
Email : sales@pro-pack.com.sg
Website : www.pro-pack.com.sg

Regional Offices :

Malaysia
Bold Pack Industries Sdn Bhd

Indonesia
PT Pro-Pack Industries

Thailand
Bold-Pack Materials (Thai) Co. Ltd

Philippines
Pro-Pack Materials (Philippines) Inc.

India
Pro-Pack Materials India Pvt Ltd

China
Pro-Pack Materials (Wuxi) Co., Ltd

Product Data Sheet

Empire Sparkle Vinyl Tile

**Model : EF-105, EF-106,
EF-107, EF-108, EF-109,
EF-110**

Part No : 7600 Series



EF-105



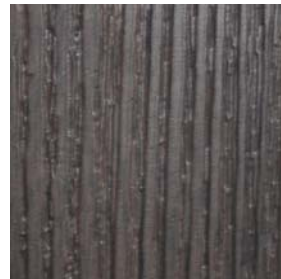
EF-106



EF-107



EF-108



EF-109



EF-110

Specification	Test Standards	Test Results
Type of Flooring	EN 649	Heterogeneous vinyl flooring
Classification	EN 685	Housing : 21 / Commercial : 33
Overall Thickness	EN 428	2 mm
Wear Layer	EN 429	0.2 mm
Weight / m2	EN 430	2.3 kg / m2
Residual Indentation	EN433	< 0.1 mm
Dimensional Stability after exposure to heat	EN434	Horizontal : 0.04 % Vertical : 0.04%
Curling after exposure to heat	EN 435 Version A	1 mm
Flexibility	EN 435	No Crack
Colour Fastness	EN 20105-B02	5
Caster Chair Suitability	EN425	Yes
Flammability	EN 4102 T4	B1

Pro-Pack Materials Pte Ltd

Blk 970, Toa Payoh North, #04-18
Toa Payoh Industrial Estate
Singapore 318992

Tel : +65 63541511
Fax : +65 63541711
Email : sales@pro-pack.com.sg
Website : www.pro-pack.com.sg

Regional Offices :

Malaysia
Bold Pack Industries Sdn Bhd

Indonesia
PT Pro-Pack Industries

Thailand
Bold-Pack Materials (Thai) Co. Ltd

Philippines
Pro-Pack Materials (Philippines) Inc.

India
Pro-Pack Materials India Pvt Ltd

China
Pro-Pack Materials (Wuxi) Co., Ltd