



Conductive Rubber Electrode Verifier PRV-813

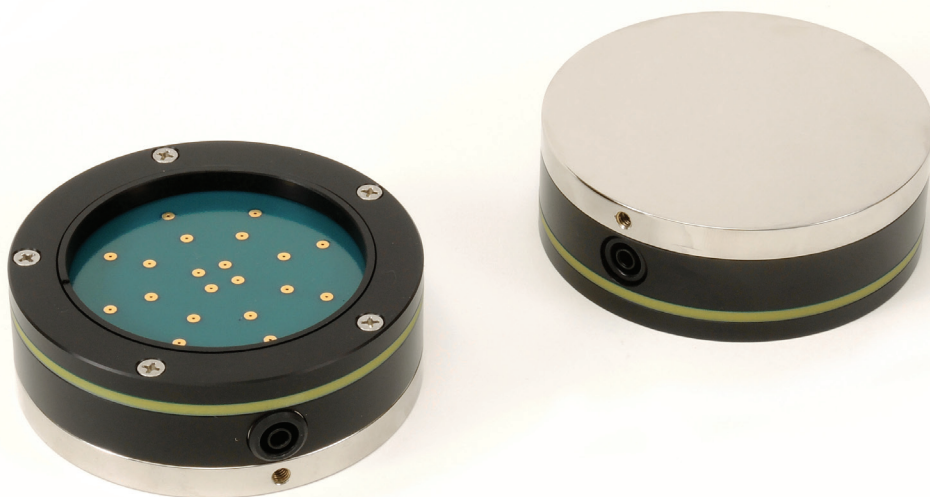
Data Sheet

Measure flatness of conductive rubber electrodes

The PRV-813 is a two-sided fixture designed to assess the flatness of conductive rubber electrodes, and their total resistance to surfaces under test. While virtually all 5 pound, 2.5 inch electrodes in industry are perfect when delivered to their end users, over time they may change considerably. Variation in electrodes may be due to extreme use, contamination, poor storage or ambient conditions, general wear, rough handling, and degradation over time.

The PRV-813 is precision fabricated to measure the surface flatness of the electrode's conductive rubber surface to within approximately 0.003 inch. Considering surface irregularities, electrode flatness insures the electrode's ability to make full contact with a test surface as may be possible.

The fixture includes 20 contact pads, each connected to a 10 megohm [1.0×10^7 ($\pm 1\%$) ohm] resistor, all connected in parallel to each other. If an electrode surface is uniformly flat and makes contact with all 20 pads, the electrode resistance will be between 4.95×10^5 to 5.05×10^5 ohms. This is the approximate range of the PRV-813, 5.00×10^5 ohms $\pm 1\%$.



Distributed by

Pro-Pack Materials Pte Ltd
The ESD & Cleanroom Specialist

📍 No. 2, Bukit Batok Street 23, #08-05 Bukit Batok Connection, Singapore 659554.

✉ sales@pro-pack.com.sg

☎ (65) 6354 1511



Data Sheet

Specifications for the PRV-813 Conductive Rubber Electrode Verifier

Flatness Test Surface	
Surface Resistance Configuration	Based on 20 each 1.0×10^7 ($\pm 1\%$) ohms Resistors in Parallel
Calculated Fixture Resistance Range	4.95×10^5 to 5.05×10^5 ohms
Average Range	4.98×10^5 to 5.02×10^5 Ohms
Metal Test Bed	
Description	Nickel plated, polished brass
Plate Size	Diameter 4 in. (101.6 mm), Thickness 0.387 in. (9.8 mm)
Plate Resistance	Resistance Point to Point (Rpp) on Surface <0.03 ohms Resistance Surface to Plate Connection <0.02 ohms
General Specification	
Diameter	4 in. (101.6 mm)
Height	1.4 in. (35.6 mm)
Weight	1 lb. 12.8 oz. (0.9 kg)

1072 Tower Lane, Bensenville, IL 60106 USA
Phone +1 (630) 238-8883 Fax +1 (630) 238-9717

www.prostatcorp.com

©2014 Prostat Corporation. All rights reserved. Prostat, Prostat Corporation, and the Prostat logo are trademarks or registered trademarks of Prostat Corporation or one of its affiliated companies in the United States and/or other countries. All other trademarks or registered trademarks are the property of their respective owners. Complying with all applicable copyright laws is the responsibility of the user. Prostat reserves the right to change, without notice, product offerings or specifications. Printed in U.S.A.

REV1: [7/7/16]-PPS299



Distributed by

Pro-Pack Materials Pte Ltd
The ESD & Cleanroom Specialist

No. 2, Bukit Batok Street 23, #08-05 Bukit Batok Connection, Singapore 659554. sales@pro-pack.com.sg (65) 6354 1511